

*Governor Eloy S. Inos*

PEACE PARK

For more information on the park facility  
please contact the Department of Land and Natural Resources,  
Division of Parks and Recreation  
(670) 234-7405



*Ribbon Cutting and Unveiling*

Friday, March 17, 2017  
3:30 pm to 6:30 pm  
Puerto Rico, Saipan

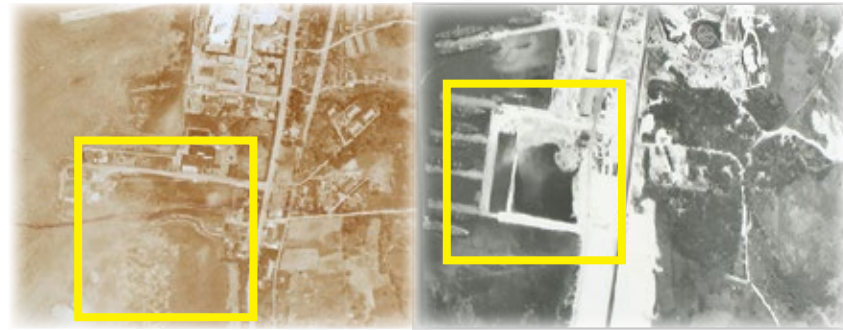


Photo credit: Scott Russell

# 1945

## U.S. Military Dock Facility



# 1995

## Dumping Ground



# 2017

## Governor Eloy S. Inos Peace Park

Funding provided by the Department of the Interior, Office of Insular Affairs, administered by the Capital Improvement Program, Office of the Governor

# CONTENTS >>

- Governor and Lt. Governor's Message ..... 4
- Program ..... 5
- Office of Insular Affairs Message ..... 6
- History ..... 7
- Timeline ..... 8 - 9
- Interesting Park Facts ..... 10 - 11
- View from the Top ..... 12
- Experience the Park ..... 13
- Meet the Contractors ..... 14
- Park Map & Guide ..... 15



*“The people look forward to the conversion of PRD to a family parkland where everyone, including our visitors, can use and enjoy the various planned amenities with family and friends.”*

*- Governor Eloy S. Inos  
Groundbreaking Remarks, 2015*



Governor Ralph DLG. Torres



Lt. Governor Victor B. Hocog

### ***Håfa adai, Tirow wáámi!***

Today, we mark the fulfillment of the final closure of the Puerto Rico Landfill with the opening of this beautiful park. For decades, the area has been shrouded by the overflow of solid waste which had previously served as a WWII scrap metal dumping ground contaminating our groundwater and surrounding areas. With the assistance of the Office of Insular Affairs, plans went into action to close this landfill and \$27.2 million was allocated for the project under the Capital Improvement Program. What used to be a longstanding dump, is now a gorgeous passive park for our community and tourists to enjoy.

It is only fitting that this park is named after the man who was instrumental in pushing this project forward to its ultimate goal. Governor Eloy S. Inos was a mentor and a visionary that always strived to make a better Commonwealth for our future generations. This park is a testament to his belief that great things can be achieved when federal and territorial governments work collaboratively to solve a longstanding community problem. As we continue to improve our infrastructure and economy, this park reminds us of our commitment to eliminate pollution and preserve our environment. We commend the CIP office, the contractors, and our partners for sustaining this initiative to ensure the health and safety of our community. This is the latest addition to our growing economy, and we hope to continue this momentum of pivoting the Commonwealth towards building a sustainable and prosperous future.

### ***Si Yu'us Ma'åse yan Ghilisou!***

  
RALPH DLG. TORRES  
VICTOR B. HOCOG

## Program

- 4:30 p.m. .... Welcoming Remarks  
*Elizabeth S. Balajadia*
- 4:35 p.m. .... Special Remarks  
*Governor Ralph DLG. Torres*  
*Office of Insular Affairs, Nikolao Pula*  
*Black Micro Corporation, Leonard Kaae*  
*Secretary of DLNR, Richard B. Seman*
- 4:55 p.m. .... Unveiling  
*Governor Ralph & Lady Diann Torres*  
*Dora Inos Deleon Guerrero*
- 5:00 p.m. .... Dedication  
*Representative Angel A. Demapan*
- 5:05 p.m. .... Blessing  
*Most Reverend Bishop Ryan Jimenez*
- 5:10 p.m. .... Turnkey Presentation  
*Governor Ralph DLG. Torres*
- 5:15 p.m. .... Closing & Ribbon Cutting  
*Virginia C. Villagomez*

*Master of Ceremony: Matthew Deleon Guerrero*  
*Chief of Staff*




## ***Puerto Rico Dump (PRD) Closure Park Development Ribbon Cutting Ceremony Program***

On behalf of Secretary of Interior Ryan Zinke and the Office of Insular Affairs (OIA), I wanted to congratulate Governor Ralph DLG Torres and Lt. Governor Victor B. Hocog, all leaders of the CNMI, the Governor's CIP Office, pertinent US federal agencies, and the construction contractor Black Micro Corporation and A&E/CM firm GHD, on the completion of the Puerto Rico Dump (PRD) Closure / Park Development CIP Project, the largest infrastructure project ever funded by OIA in the CNMI. I would also like to recognize our US congressional appropriations support for continued CIP funding in all the U.S. affiliated islands.

What we see today before us is a successful public park that has evolved over the past 14 years and 5 CNMI Administrations; Governors Pedro P. Tenorio, Juan Babauta, Benigno Fitial, the late Eloy Inos, and current Governor Ralph DLG Torres.

Saipan now has another environmentally friendly attraction adjacent to the American Memorial Park that its residents along with tourists can enjoy. In addition, the waters of the Saipan lagoon, and the fish and coral within now have greater protection for the benefit of the entire island for generations to come.

***Si Yu'us Ma'åse!***

  
NIKOLAO PULA  
Acting Assistant Secretary  
For Insular Areas

# HISTORY

In 1945, the park site was a docking facility, used and constructed by the U.S. Military immediately after World War II. It then transitioned into a scrap metal dumping site for the military and became the official solid waste dumping ground in 1953, formerly known as *Puerto Rico Dump*. Throughout the years, the dump posed both environmental and public health threats through pollutant discharge into the nearby lagoon, open fires burning periodically, and the flying of debris into the ocean. After many years of community protests and federal intervention and assistance, the dump was officially closed in February 2003.

In 2003, the CNMI Department of Public Works received the Targeted Brownfields Assessment (TBA) Grant from the U.S. Environmental Protection Agency to conduct a feasibility assessment of converting the property into a community park. A closure report was completed in 2006 and an Invitation to Bid was published seeking contractors for the Design, Construction, and Construction Management of the project. The U.S. Department of the Interior, Office of Insular Affairs awarded a grand total of \$27.2 million for the transformation of the park – the largest federally funded project in the CNMI.

***“I cannot  
thank you  
all enough  
for pushing  
this project  
forward.”***

*- Governor Eloy S. Inos  
Groundbreaking Remarks, 2015*

*Governor Eloy S. Inos Peace Park*

The late Governor Eloy S. Inos dedicated over 30 years of his life to public service in the CNMI. He embodied all the characteristics of a true statesman, sharing his wisdom and acting as a mentor for many leaders in the government. He was a true champion of our environment, devoted to transforming the former dump into a beautiful space for our residents and tourists to enjoy. The *Governor Eloy S. Inos Peace Park* is a true manifestation of his passion for the protection and conservation of our natural resources that will now be visible to the community and future generations.

# 1945-2017



Area serves as dumping site

The CNMI and EPA agree on a schedule to close Puerto Rico Dump

CNMI considers other designs for regulatory closure:

- Park Facility
- Floating Hotel
- Basic Closure
- Port Extension



EPA lists dump closure as success story



Puerto Rico Dump Closure Project Groundbreaking

2017



Park completion

1945



U.S. Military builds Dock facility immediately after WWII

1953

1994

1997

2003

2004

2005

2006

2012

2014

2015

EPA issues Administrative Order citing the CNMI for discharging pollutants into the lagoon in violation of the Clean Water Act



Puerto Rico Dump officially closes after the opening of Marpi Landfill



EPA issues Administrative Order on Consent



GHD, Inc. completes Consensus Building Report with stakeholders and regulatory agencies

Park design finalized and construction bids accepted by the CNMI



The Park gives you a front row seat to Saipan's beautiful sunsets.



The high elevation offers a panoramic view of the Saipan Lagoon.

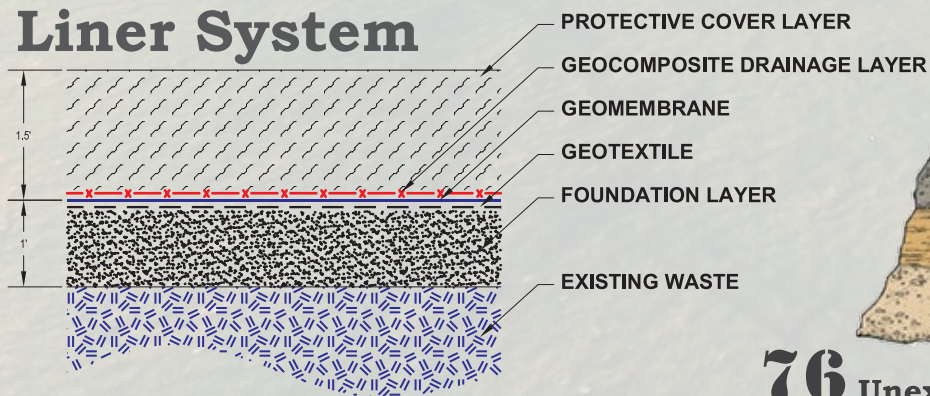
# Interesting PARK FACTS

The Top Deck elevation is 95 ft. above sea level.



110,000 cubic yards of waste was rearranged to shape the park.

## Liner System



## What was buried...



76 Unexploded Ordnances were found on-site and later detonated at Marpi Point, located in the northernmost part of the island.

The entire park facility measures more than 21 ACRES - over 15 football fields!



23 METHANE GAS VENTS, connected to a network of nearly 2,000 feet of pipe, are installed throughout the park!



BELIEVE IT OR NOT...



Approximately 29,000 discarded tires were shredded and used as backfill material.



Dwarf Laue Fern



Bermuda Grass



Flame Tree



Purple Spider Lily



Ironwood Tree



Kou Tree



Singapore Plumeria



Variegated Liriope



Beach Morning Glory

15 different types of plants can be found all over the park!



Monkeypod Tree



Naupaka



Bougainvillea



Croton Petra



Coconut Tree



Foxtail Palm

Plants were selected based on depth of root growth to prevent damaging the liner system.

# View from the Top



**Mañagaha:** An uninhabited isle, located approximately 1.75 miles from the *Governor Eloy S. Inos Peace Park*, is a popular destination for BBQs and water-sport activities. It is also the burial ground of the legendary Chief Aghurubw, who established the first Carolinian settlement in the Marianas in 1815.

The **Port of Saipan** consists of 2,600 linear feet of berthing space and a 22-acre container yard. A major contributor to the CNMI's economic development, the port promotes manufacturing and maritime growth while advancing trade and commerce.

Source: [cpa.gov.mp](http://cpa.gov.mp)



The beautiful view of **Garapan** village includes: **Smiling Cove Marina** – a dock with moorings and supplies for private boats and yachts; **American Memorial Park** – 133 acres of Federal park ground surrounded by beaches, sporting areas, picnic sites, playgrounds, and a 30-acre protected wetland and mangrove forest; and **Saipan's Business District** – the island's busiest tourist area where lodging, shopping, and a vibrant nightlife take place.



# Experience the Park!



# Meet the Contractors

## Design & CM/CQA



**Company:** Gutteridge, Haskins & Davey's (GHD, Inc.)  
**Established:** 1928  
**Location:** Garapan, Saipan  
**Architectual & Engineering Design**  
**Contract Start Date:** July 3, 2013  
**Contract End Date:** August 30, 2014

## Construction Management/Construction Quality Assurance

**Contract Start Date:** July 15, 2015  
**Contract End Date:** March 30, 2017

*"Together with our clients, we create lasting community benefits."*

Established in 1928, GHD is one of the world's leading professional services companies operating across five continents and has an integrated network of offices throughout Asia, Australia, Europe, North and South America – and the Pacific region in global markets of water, energy and resources, environment, property and buildings, and transportation. Driven by a client-service led culture, we connect the knowledge, skill and experience of our people to create lasting community benefits.

Source: GHD.com

## Construction



**Company:** Black Micro Corporation  
**Established:** 1969  
**Location:** Tamuning, Guam  
**Contract Start Date:** July 15, 2015  
**Contract End Date:** March 30, 2017

*"On track with Black."*

Black Construction Corporation (BCC) has a proud reputation as one of the largest and most experienced construction companies in the Western Pacific. The company has a long and successful history of executing projects encompassing civil, mechanical, electrical, structural, architectural and multi-disciplined engineering and management throughout Guam, the CNMI, Micronesia and the Philippines. This long and proven history has provided Black with invaluable knowledge and a reputation of an unwavering commitment to project safety, a quality product of the highest standards through its excellence in estimating, engineering, scheduling and construction expertise. Black Micro Corporation is an affiliate of BCC, headquartered in Guam and operating in the CNMI and the Federated States of Micronesia.

Source: Black Construction Guam © 2017



### LEGEND:

- |  |  |                      |
|--|--|----------------------|
| PARK ENTRANCE                          | TOP DECK GRAVEL PARKING AREA                   | MONKEY POD TREE      |
| PARK EXIT                              | PAVILION                                       | COCONUT TREE         |
| RESTROOMS                              | TOP DECK CONCRETE SWALE                        | IRON WOOD TREE       |
| PARKING                                | MILE MARK                                      | FLAME TREE           |
| LOWER PATHWAY                          | CONCRETE TRIBAR SHORELINE REVETMENT PROTECTION | KOU TREE             |
| MIDDLE PATHWAY                         | BOULDER SHORELINE REVETMENT PROTECTION         | PURPLE BOUGAINVILLEA |
| RAMP TO MIDDLE PATHWAY                 | GAS VENTS                                      | VARIETY PLANTS       |
| RAMP TO TOP DECK                       | MONITORING WELL                                | NAIYAKA PLANTS       |
| GRAVEL PATH SHORTCUT TO MIDDLE PATHWAY | GAS PROBE                                      |                      |
| GRAVEL PATH SHORTCUT TO TOP DECK       |  |                      |

**NO**

- SMOKING
- FIRES OR OPEN FLAMES
- TRAVERSING ON THE SIDE SLOPES
- MOTORIZED VEHICLE ENTRANCE EXCEPT WHEN PERMITTED
- SWIMMING OR DIVING ALONG THE WATERFRONT
- VANDALIZING OR DEFACING OF PARK PROPERTY OR AMENITIES